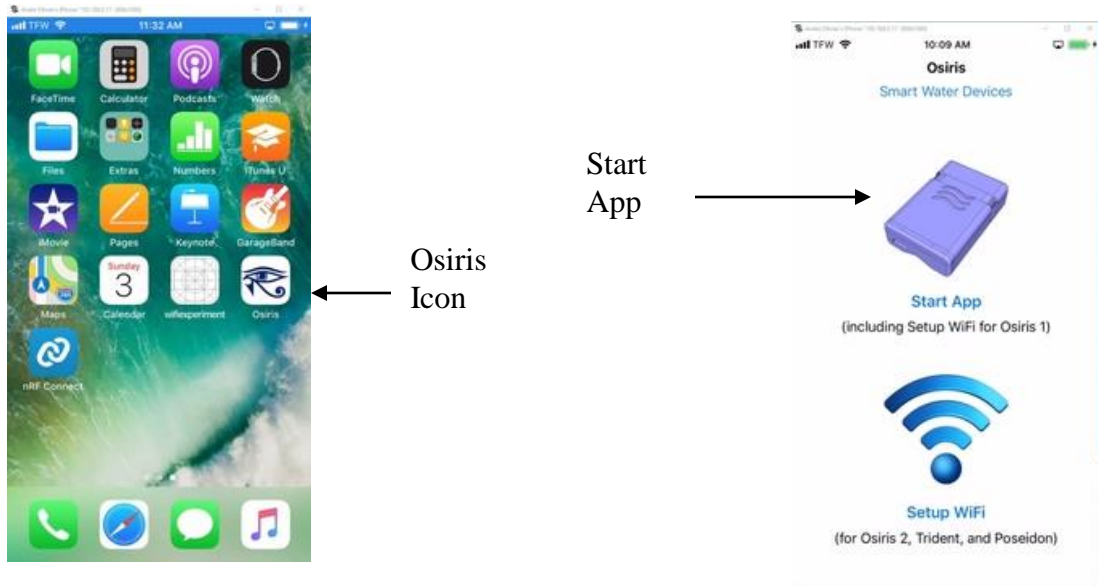


Osiris / Trident / Poseidon Manual

3/3/2019

Revision: 1

This manual outlines operation of the Osiris App for iOS on iPhone



The first time you open this App, you will be asked to register with the AZ APPS server as a new user. Following your registration, you will be asked to register your unit (Osiris, Trident or Poseidon) and to connect it to the Internet through your home network. All three products operate via WiFi (wireless internet), therefore your router need to have WiFi enabled.

Please refer to the [How to Setup Osiris 2, Trident & Poseidon](#) page on the www.myazapps.com website. There is also a PDF that will take you through the process, step by step.

Once your unit is online, you can use the free Osiris App to monitor your water use, detect water leaks, conserve water, and protect your home from water damage.

Status Page

Status Page displays all relevant information about your unit at a single glance.

Your unit is not reporting to the AZ APPS server



No weather report

No unit statuses

No usage report

A correctly reporting unit



A unit may not report in because:

- 1) You entered an incorrect WiFi name & password
- 2) Your unit is out of range of your WiFi router
- 3) Your home network is not connected to the Internet

Status Page during alarm:

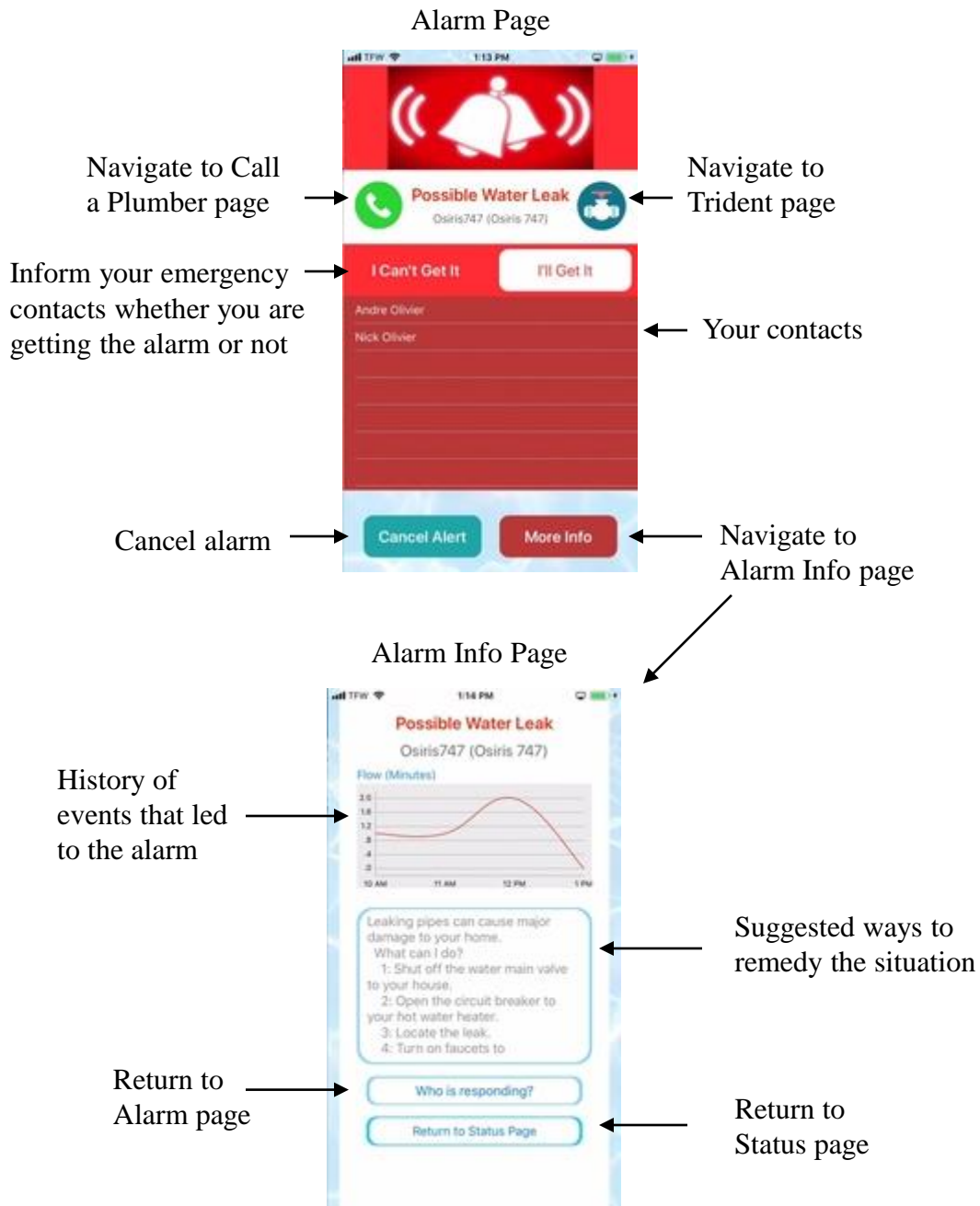
Alarm warning



Navigates to Alarm page

Alarm Page

Alarm Page displays all relevant information about a water leak alarm or a pipe freeze alarm



History - Daily Water Use

Change the day →

Smooth versus data points
Osiris = minutes per hour
Poseidon = liters per hour

No Alarm. If there was an alarm, the text would be **RED** →

Switch to Week, Month or Year view ←

Weather forecast ←

History - Weekly, Monthly or Yearly Water Use

Select Current water use or Progress over past week, month or year →

Select Hi / Lo Temperature or Relative Humidity →

Change the week ←

Current
Last Week

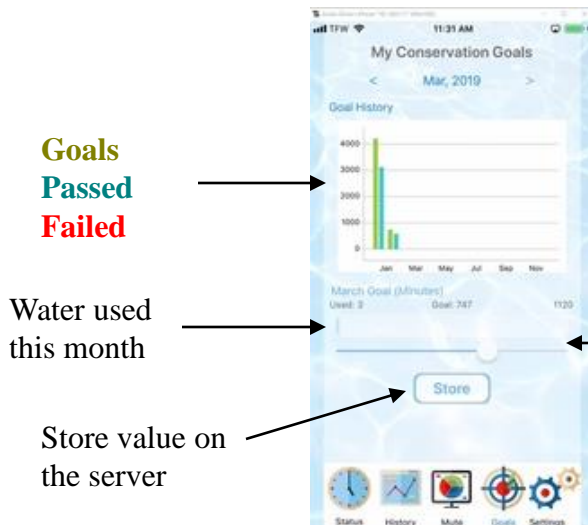
Mute Alarms Page



This page is for unscheduled extended water use. Use it to turn alarms off when filling a swimming pool, deep watering a tree or doing plumbing repairs.

Enter value → 002 Hours ← Select hours or days
Start mute → Mute

Set Water Conservation Goals



Set a monthly goal to conserve water and save money. Go back to previous months to get personal feedback on your water habits.

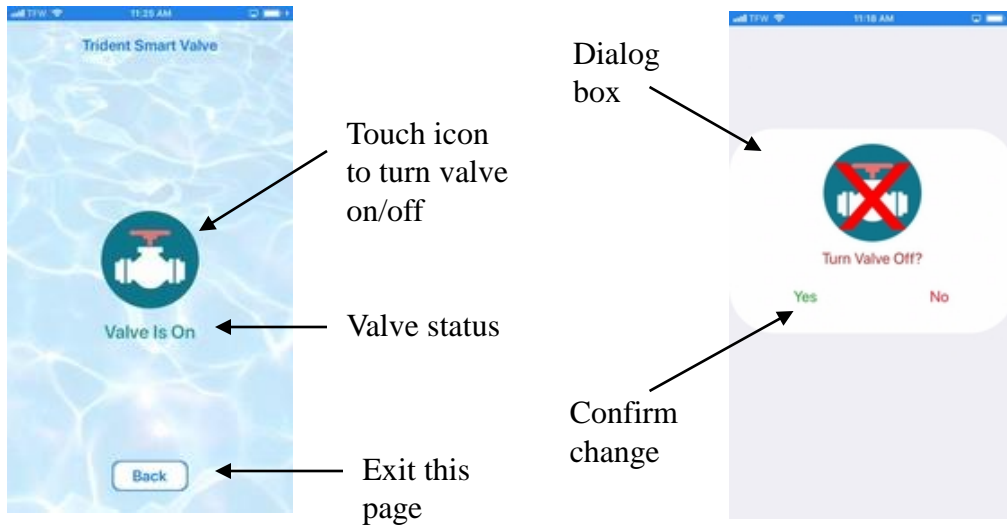
Find out if you're using more water than normal in the morning, at night, or on weekends.

Goals Passed Failed →
Water used this month → Used: 0 ← Goal slider
Store value on the server → Store

Unit Settings – Trident Smart Valve

This page controls the Trident Smart Valve.

You must be looking at a Trident, or an Osiris or Poseidon that is paired with a Trident.



No Trident valve installed or paired



Unit Settings – Call a Plumber

This page lists plumbers in your area who have registered with AZ APPS



Touch the selected plumber to automatically dial

Leave this page

Unit Settings – Manage Contacts



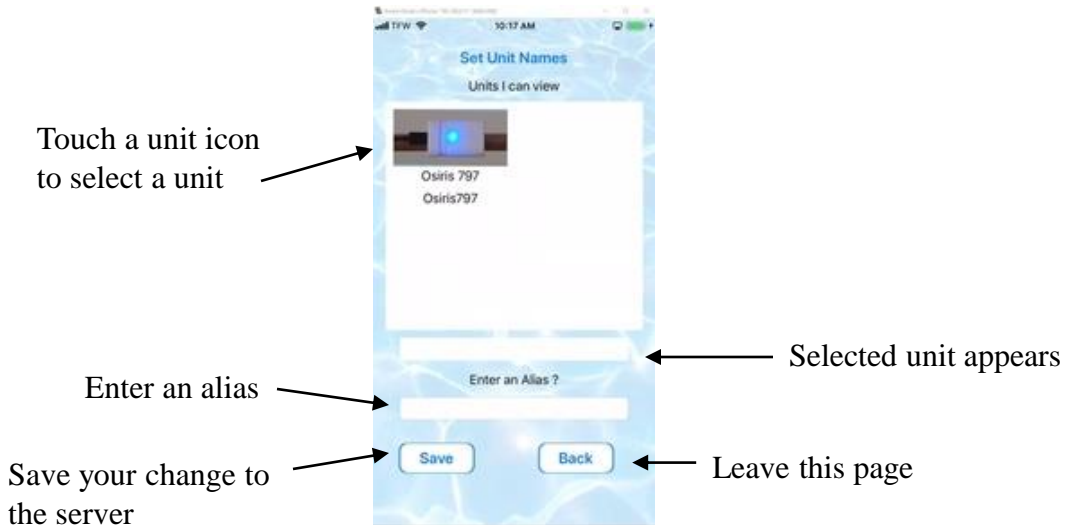
Touch a suggested contact to block

Touch Save to upload changes to the server

To delete a contact, touch the contact to get a pop-up

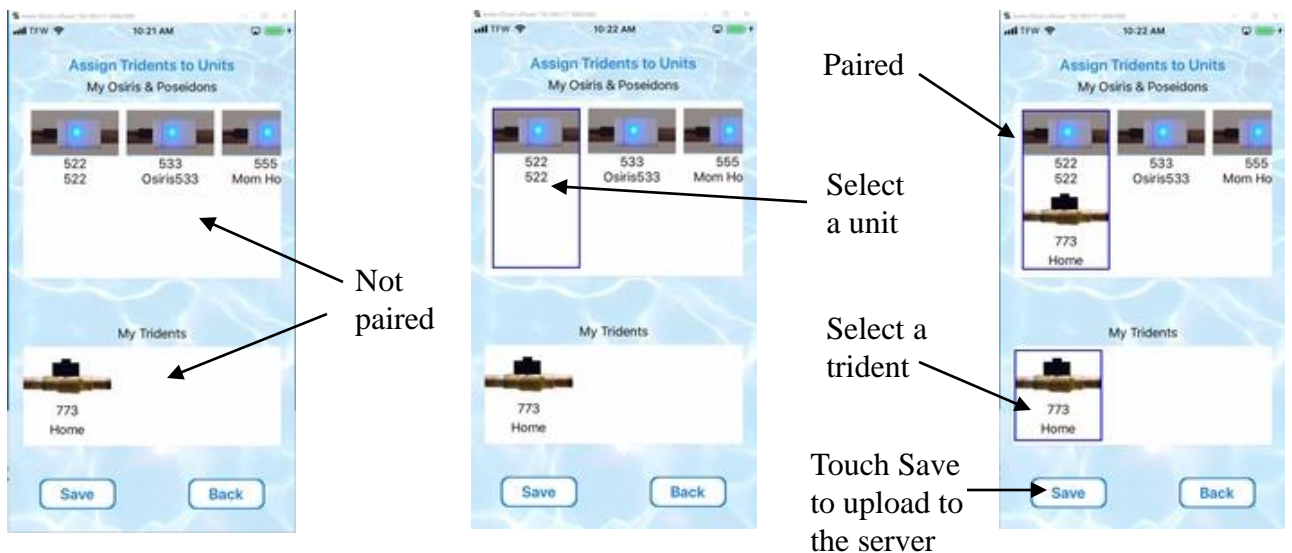
Unit Settings – Manage Units

This page allows the user to name units. i.e. Home, cabin, etc...



Unit Settings – Assign Tridents to Osiris & Poseidons

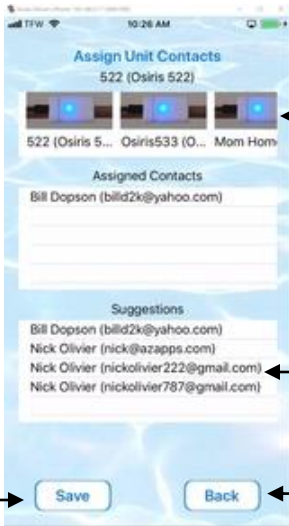
This page pairs Trident water valves with Osiris or Poseidon units. You can then control the Trident valve by selecting the Osiris or Poseidon and navigating to the Trident page in Settings



Unit Settings – Assign Contacts to Units

You can assign many contacts to one unit, with different access levels

Add a contact to a unit



Touch unit icon to select

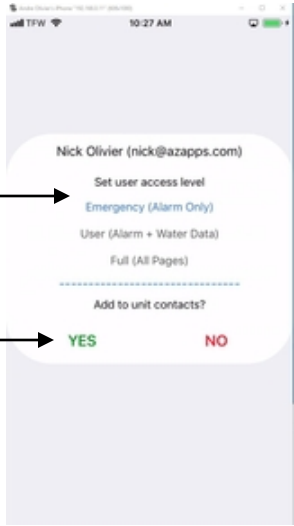
Assign access level

Confirm

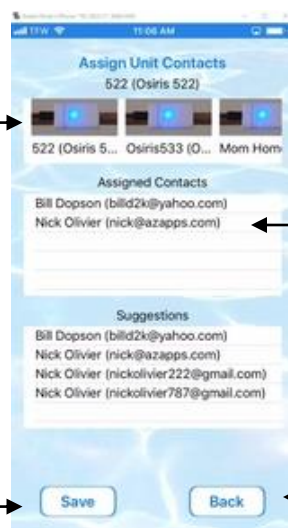
Touch Save to upload to the server

Select a contact

Leave this page



Remove a contact from a unit or change their access level



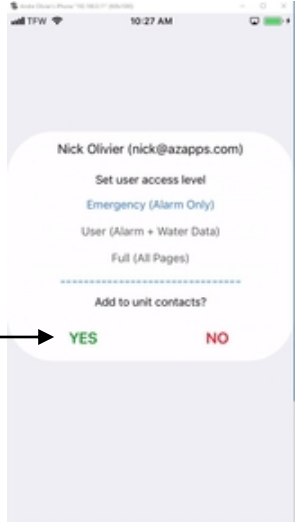
Touch unit icon to select

Touch a contact to select

Confirm

Touch Save to upload to the server

Leave this page



Unit Settings – View a Unit / Set a Default Unit



Touch Set Default to go to Default Page

The App allows users to view different units without changing their default unit

Touch a unit icon to select

Leave this page



Touch View Unit to go to View Unit Page

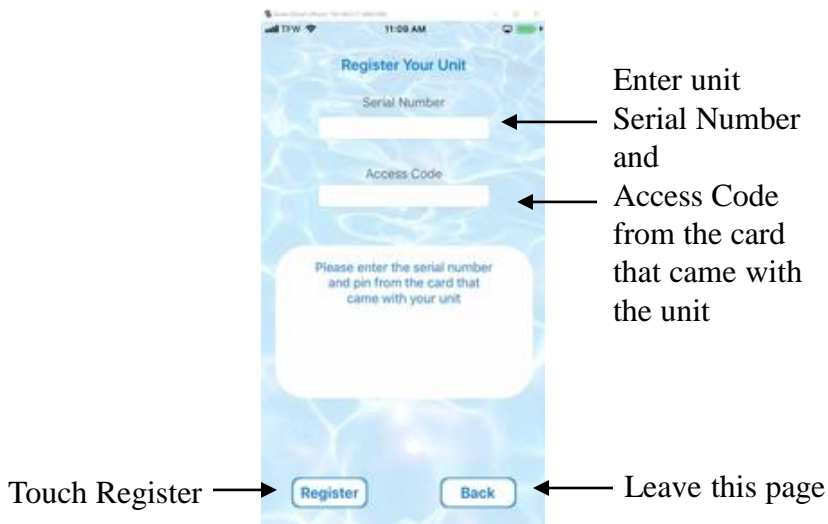
Once the default unit is set, the App will automatically select that unit when it is restarted

Touch a unit icon to set it as the default unit

Leave this page

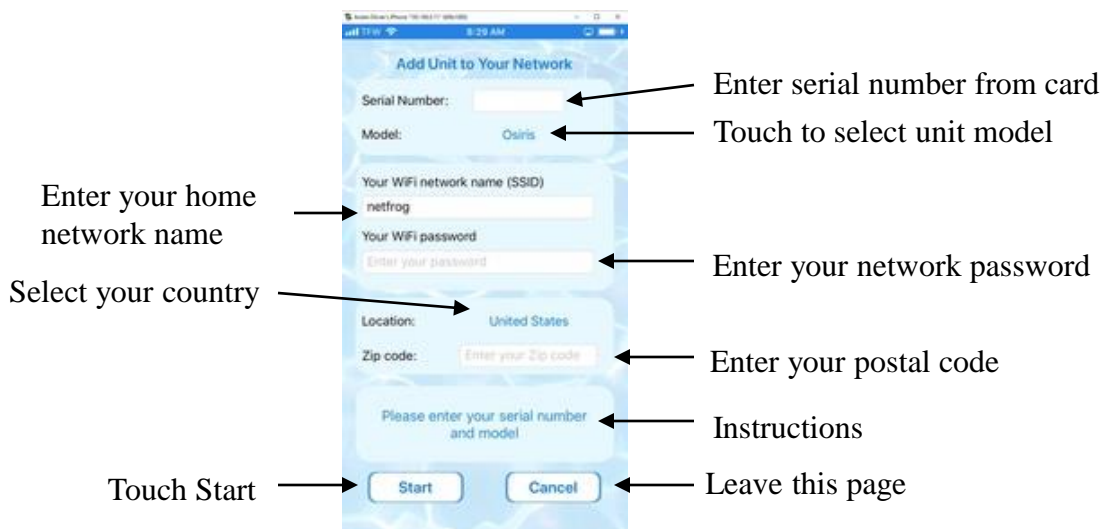
Unit Settings – Register a New Unit

Register as the owner of your Osiris, Trident, or Poseidon



Unit Settings – Connect Unit to My WiFi

This page uploads your home network Name and Password to the unit. The unit then connects to your home WiFi network and accesses the Internet.



Unit Settings – View Diagnostics

This page displays data that your unit uploaded to the server today. It also tells you when your unit last connected to the server.

Your unit did not connect to the server today



No Data

No recent server contact

Connected unit



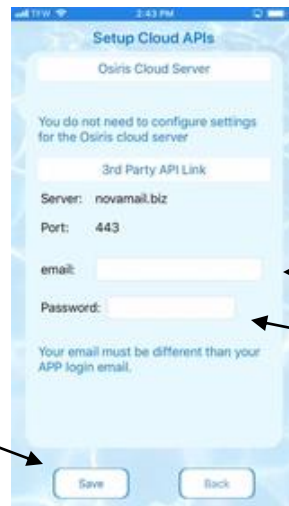
Raw data collected by the unit

Status of connection and calibration

Leave this page

Unit Settings – Setup Cloud APIs

This page sets up your access to the free AZ APPS APIs. These APIs are used to link your unit with 3rd party Smart Hubs, such as Alexa, Google Home, Smart Things, or private servers such as Raspberry PI, Arduino, etc...



Choose a different Email (not the one you registered with)

Choose a password

Touch Save to upload date to the server

Unit Settings – Set Unit Alarms

Customize Osiris settings to suit your needs

Water flow time before alarm

Temperature time before alarm

Hot/cold pipe time before alarm

High & low pipe temperature limits

High temperature limit

Low temperature limit

Automatically shut off water when there's an alarm?

No

Save Back

Select Fahrenheit or Celsius

Automatically shut off water when there's an alarm?

No

Select temperature scale

Fahrenheit

Display water flow in

Minutes

Flow on sound threshold: 178%

More sensitive Less sensitive

Touch Save to upload data to the server

Display water flow in: Minutes – Osiris Gallons / liters – Poseidon

Sensitivity adjust (Osiris only)

Leave this page

Save Back

Unit Settings – Set Alarm Exceptions

Flow alarms can be disabled for regular flow events like yard sprinklers

The screenshot shows the 'Set Alarm Exceptions' screen with a 'Weekly Calendar' at the top. Below the calendar is a table of alarm zones. The table has columns for 'Set', 'Start Time', 'Duration (Min)', and 'On/Off'. The 'On/Off' column contains green 'ON' buttons and grey 'OFF' buttons. At the bottom of the screen are 'Save' and 'Back' buttons.

Set	Start Time	Duration (Min)	On/Off
Mod >	12:25 PM	460	OFF
Mod >	10:15 AM	134	ON
Mod >	4:00 PM	420	OFF
Mod >	9:24 PM	1031	OFF

Annotations for the screenshot:

- Select the day (points to the calendar)
- Touch Mod to modify a zone (points to the 'Mod >' button)
- Four independently programmable zones (points to the table)
- Enter start time & duration (points to the 'Start Time' and 'Duration (Min)' columns)
- Enable or disable a zone without deleting its settings (points to the 'ON/OFF' buttons)
- Touch Save to upload data to the server (points to the 'Save' button)
- Leave this page (points to the 'Back' button)

Unit Settings – Watch Help Videos

We have on line videos to help you make the best use of your Osiris, Trident or Poseidon

The screenshot shows the 'View Training Video' screen with a list of three training videos. Each video entry includes a thumbnail, the video title, the number of views, and the time it was posted. At the bottom of the screen is a 'Back' button.

Video Title	Views	Posted
Trident Smart Water Valve	10 views	3 weeks ago
Osiris Smart Water Monitor	21 views	3 weeks ago
Setup Your Osiris Smart Water Monitor	114 views	3 weeks ago

Annotations for the screenshot:

- Select the appropriate video and watch anytime, anywhere (points to the video list)

Unit Settings – Logout

Touch logout and you have logged out of the App.

If you do not log out, the Osiris App remembers you and you won't have to log back in the next time that you use the App.

Unit Settings – Calibrate Water Flow (Osiris 1 only)

When we launched Osiris 1, we believed that it would be advantageous for users to manually calibrate Osiris. After much feedback from our customers, we realized that automatic calibration is better. Osiris 2, Trident, and Poseidon auto-calibrate.

After Q2,2019, Osiris 1 can be upgraded to also auto-calibrate. Online units will be upgraded over the air. Off-line units may be returned to AZ APPS for firmware update. Auto-calibration requires that the user download the latest version of the free Osiris App.

